



TME's new *Intelligent* Package Test System

BT *Integra-Pack*®

The TME BT *Integra-Pack*® is a bench-top, high-resolution (0.001 psig) test instrument with a small footprint and user-friendly ease of operation. **Electronic pressure and flow controls** provide precise and repeatable test conditions, while **automatic and high flow output** allow testing of large porous packages. Applications cover a range of flexible or rigid, porous and non-porous, open or sealed packages.

“Out-of-the-Box” Burst Test Mode

The BT *Integra-Pack* is designed to provide out-of-the-box, automatic burst testing using default parameters so after attaching the package to be burst tested, the operator need only press ONE button to accomplish the test.

Automatic or Manual Parameter Definition

The intelligent BT *Integra-Pack* will test any package in automatic mode, with no need to input test parameters. However, its sophisticated nature is combined with a manual mode that lets the user input parameters such as ramp rate control and back pressure drop sensitivity. This allows testing of special configurations or types of packages or performance of specific research and data-gathering activities.

Icon-based, Touch-Driven Color Display

The touchscreen color display provides easy, clear navigation through the wide variety of data handling and review screens. Clearly defined icons make it easy to choose test modes, move from automatic to manual test settings, view test results in numeric and/or graphical format, and securely handle test data records.

The BT *Integra-Pack* is a definitive step forward for traditional burst testing. A completely integrated process control tool, the instrument is not only valuable at the point of testing, but is also able to transmit your data from direct process control to your quality department, making it a quality control tool as well. Its objective is to enable you to produce a package that is as valid as the product enclosed.



Compliance to Standards:

ASTM F-2054, F-1140, F-2095

ISO-11607

FDA CFR 21 Part 11

Standard Test Modes:

Burst Test

Creep Test

Creep-to-Failure Test

Pressure Decay Leak Test

Standard I/O Functions:

USB connection to PC,

mouse, keyboard or printer

USB drive support for program

data storage and data export

LAN remote instrument control

and data transfer

Systech Illinois

HA Ua YZCI Zfxgl JfYCL- " L5 U?

Z(('f\$!% (('8%,' ,

Technical Specifications: BT Integra-Pack©

Dimensions..... 10" X 13"x 7" H (25.4 x 33 x 18 cm)
 Weight.....12.5 lbs. (5.6 kg)
 Power Supply Voltage.....100 to 230 VAC 50/60 Hz, 45 watts max
 5 watts in Standby mode
 Air Supply Pressure.....60 to 120 psig (4.0 to 8.0 bar),
 Instrument Quality Air
 Controls.....Electronic Pressure Control, Illuminated
 Start/Stop Switch, Key Lock, Power ON/OFF Switch
 Test Modes..... Burst, Creep, Creep-to-Failure, Pressure Decay Leak
 Display.....Multicolor 5.7" QVGA, Touchscreen
 Units of Measure.....PSI / InH₂O / mbar / kPa / InHg
 Memory Capacity 32 Mbytes
 Expandable Memory, Internal SD Slot (512 MB)
 Measuring Range.....BT-IP-50: 5 InH₂O to 50 PSI (12.5 to 3450 mbar)
 BT-IP-100: 0.5 PSI to 100 PSI (34 to 6895 mbar)
 Measuring Resolution..... BURST: 0.01 psi (0.3 InH₂O) or 0.7 mbar
 LEAK (Pressure Decay): 0.001 psi (0.03 InH₂O) or 0.07 mbar
 Communication (I/O).....USB Host Port (2x)
 VGA Monitor Display (DB15)
 Network LAN (RJ-45)
 Serial RS-232 (DB9)
 USB Device Port (PC Comm Port)
 Calibration.....NIST Traceable
 Standards.....ASTM F-1140, F-2054, F-2095
 Accessory I/O:8 Opto Outputs, 8 Inputs, 3 Digital I/O
 Start, Stop – Inputs
 Pass, Fail - Outputs

TM Electronics' Technical Specialists are highly experienced and ready to assist you in determining and solving your leak, flow and package testing needs and in getting the most out of your test system.

In addition to our wide range of package testing accessories, our Design Engineering team can provide you with help in addressing unique package testing situations and requirements.

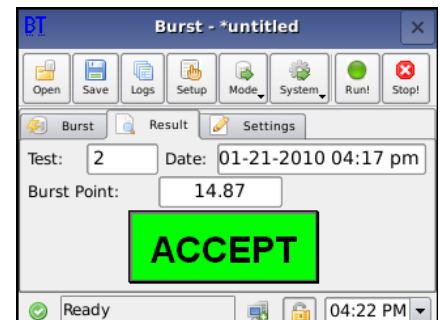
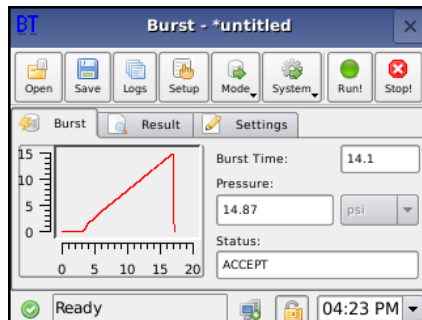
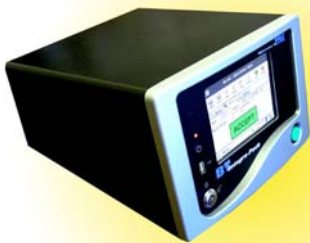
Visit us on the web at www.tmelectronics.com for more information on the technology of leak, flow and package testing and how we can best help you.

Standard Features

- Complies with standards for all commonly-used Seal Strength and Package Integrity tests
- Automatic Burst Test Mode
 - o Results right out of the box, no lengthy setup
 - o Senses package size during prefill
- Manual Burst Test Mode
 - o Multiple levels of control for optimal test results: Ramp Rate, Porous vs. Non-Porous Packages, Max/Min Acceptance Limits, Pressure Drop Sensitivity
- High Performance
 - o High Pressure Resolution (0.01 psi burst, 0.001 leak)
 - o Automatic Electronic Regulator (fast pressure setting)
 - o High Flow Capacity (up to 15 CFM)
 - o Low Pressure Sensitivity at 5 InH₂O
- Advanced, graphical user interface compatible with USB HID keyboards, mice, bar code readers
- Low Power Stand-by Mode for energy conservation
- Graphical test plot display for leak, burst and creep tests
- Touch Screen Color LCD Display with Pop-up, On-Screen Keyboard and Number Pad
- Standard and Metric pressure units
- Test data exporting to PC using USB Flash Drive or Integrated LAN File Server

Accessories

- Tilt Stand
- Internal SD Card for Expanded Storage (512 MB)
- TS-02 Closed Package Test Fixture
- Test Probes (various sizes available)
- TS-01 Open Package Fixture, 12" Jaw Width
- TS-04 Open Package Fixture, 24" Jaw Width
- Restraining Plate Fixtures
- LA-05 Filter Drying Assembly
- USB Printer
- Digital Flow Valves, Leak Orifices
- Custom Fixtures and Adapters for Your Application



System Illinois

H Ua YZCl ZfXg\ JfYCL- " L5 U?

Z((f\$L% (('&% , ' ,

sales'i _@grghYW]`]bc]g.com

www.grghYW]`]bc]g.com