

# 8501 Oxygen Permeation Analyser



## Advanced Technologies in Oxygen Permeation Measurement



### Applications

Produce Manufacturers  
Food Companies

Packaging Manufacturers  
Converters

Process Companies  
Distributors  
R&D

### Features & Benefits

- Digital electronics
- OTR displayed as  $\text{cc/m}^2/\text{day}$  or  $\text{cc}/100\text{in}^2/\text{day}$
- Automated test routine
- Scaleable analogue outputs
- RS232 output
- Data logging capabilities
- Low cost system
- Accuracy traceable to current NAMAS/N.I.S.T. standards
- Sensor life indicator

Conforms to: ASTM D-3985 ISO 15105-2 DIN 53380 JIS K-7126 F2622-08

# Your solution to laboratory quality analysis of packaging film barriers in a simple to use benchtop system.

Systech Illinois' 8501 offers a cost effective solution for those who need accurate, uncomplicated measurement of oxygen transmission rates (OTR) through permeable films.

The 8501 features state of the art electronics that allow the user to initialise test or calibrate with the touch of a button. Scalable analogue outputs allow the user flexibility when connecting to a chart recorder.

A standard RS232 port enables data logging capabilities. The unique LIFE parameter indicates when the internal oxygen sensor needs to be replaced.

## Fast Analysis

The proprietary sensor design of the 8501 allows for extremely fast, accurate results. In a head-to-head comparison between the 8501 and its competitors, the 8501 was proven to be up to 4 times faster.

With a purge time of only 30 minutes and test times as short as 20 minutes, the 8501 is a must for high volume production facilities.

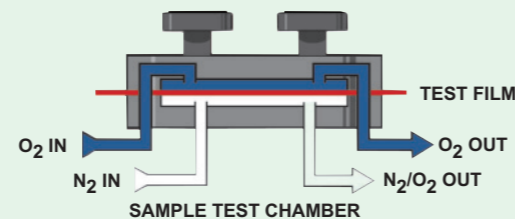
## Principle of Operation

The 8501 utilises our proprietary sensor to detect oxygen transmission rates through flat film barriers. Flat film samples are clamped in a diffusion chamber. Pure oxygen (99.9%) is then introduced into the upper half of the chamber while an oxygen free carrier gas flows through the lower half. Molecules of oxygen diffusing through the film into the lower chamber are conveyed to the sensor by the carrier gas.



Systech Illinois' 8501 combines trace oxygen sensitivity, rugged dependability, and exceptional ease of use in a compact, single chamber, precision oxygen permeation analyser.

With 2 button operation, the 8501 is simple to operate and requires little or no special operator training. The unit is easily calibrated to a certified NAMAS / N.I.S.T. traceable calibration gas. This makes the test results traceable to current NAMAS / N.I.S.T. standards.

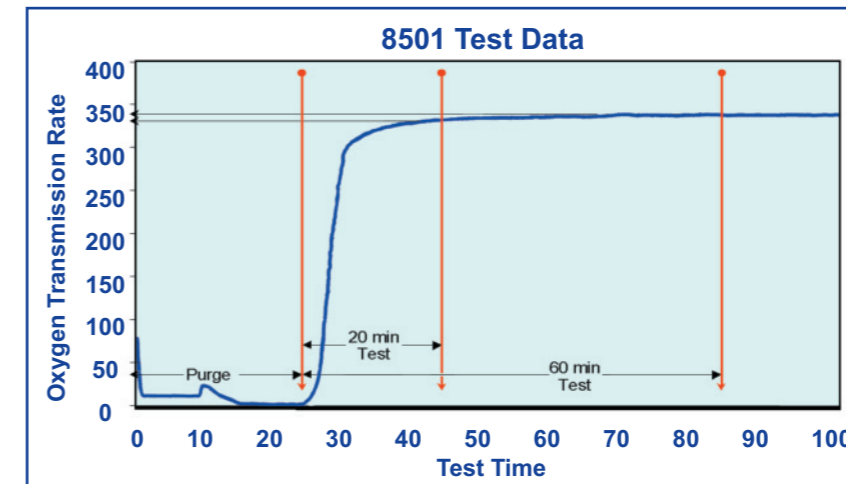


This allows a direct measurement of the oxygen without using complex extrapolations. Oxygen transmission rate of the test film is displayed as either  $\text{cc}/\text{m}^2/\text{day}$  or  $\text{cc}/100\text{in}^2/\text{day}$ .

## Proven Accuracy

The data plot below illustrates that a test film of  $340\text{cc}/100\text{in}^2/\text{day}$  and a test run of 60 minutes yields only about  $8\text{cc}/100\text{in}^2/\text{day}$  (2.3%) increase. This is compared to the  $332\text{cc}/100\text{in}^2/\text{day}$  sensed within the first 20 minutes.

Many applications will find that a shorter 20 minute test routine will consistently produce reliable and adequate results.

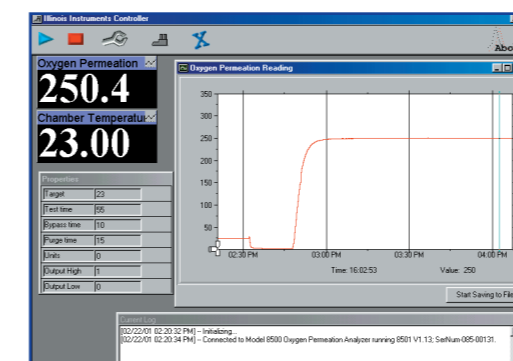


## Easy to use software

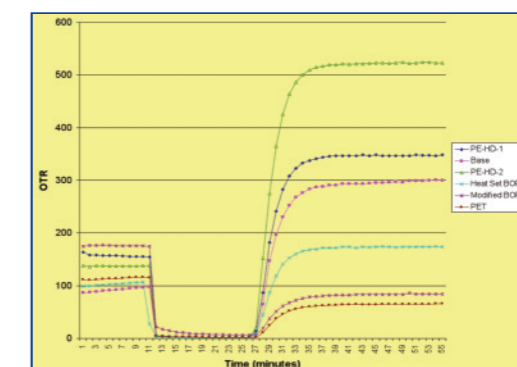
Although the 8501 is a stand-alone instrument, an RS232 port is provided for connection to a PC. Supplied software allows users a graphical interface for display, storage, and printout of the data.

The stored data can also be exported to a spreadsheet program such as Excel® or Lotus®. These programs allow you to graph and print the data or incorporate it into analysis reports for customers or management.

## PC Supplied Software



## Typical Exported Excel® File



## 8000 Series - Oxygen Permeation Analysers

Systech Illinois' range meets the requirement for the testing of any application.



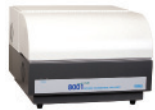
### 8001

533 x 533 x 305(mm) 28.1kg  
2 stations for films or packages, precise humidity control, can switch between wet or dry samples within minutes.



### 8003

533 x 533 x 305(mm) 28.1kg  
As 8001, but tests dry only.



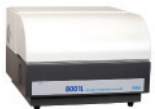
### 8001 e-net

533 x 533 x 305(mm) 28.1kg  
As 8001, with new coulometric oxygen sensor and an integrated computer.



### 8200

533 x 533 x 305(mm) 28.1kg  
2 station for films or packages.



### 8001L

533 x 533 x 305(mm) 28.1kg  
As 8001, with new coulometric oxygen sensor.



### 8501

356 x 356 x 279 (mm) 18.2kg  
Reduced specification single station for film or package, dry test only.



### 8002

533 x 533 x 305(mm) 28.1kg  
As 8001, but tests only dry or wet (assumed 100% RH).



### 8700

760 x 590 x 350 (mm) 65kg  
11 stations for films or packages.

## Technical Specifications

8001 8001 e-net 8001L 8002 8003 8200 8501 8700

### OTR Test Range

#### Films

0.005 - 432,000 cc/m<sup>2</sup>/day  
(0.0003 - 28,000 cc/100in<sup>2</sup>/day) No masking required

0.008 - 432,000 cc/m<sup>2</sup>/day  
(0.0005 - 28,000 cc/100in<sup>2</sup>/day) No masking required

0.04 - 100,000 cc/m<sup>2</sup>/day  
(0.0001 - 5,000 cc/100in<sup>2</sup>/day) No masking required

1 - 99,999 cc/m<sup>2</sup>/day  
(0.07 - 6,800 cc/100in<sup>2</sup>/day) No masking required

#### Package

0.000025 - 1,000 cc/pack/day  
0.00004 - 1,000 cc/pack/day

### Test Temperature Range

5°C to 50°C (41°F to 122°F)  
15°C to 40°C (59°F to 104°F)

### Controlled RH Testing

Dry (0% RH) or generated RH (20% to 90%)  
Dry and Unknown Wet RH (Assumed saturated or 100% RH)  
Dry only

### Expansion

Expandable up to 5 Modules (Total 12 test cells)  
Expandable up to 5 Modules (Total 66 test cells)

### Test Sample Size

Films 50cm<sup>2</sup>  
Films 100cm<sup>2</sup>  
Packages

### Calibration

Films or NIST gas

### Automatic Temperature Control

### Power rating

100-240 VAC, 50/60 Hz, 840 VA (max)  
100-240 VAC, 50/60 Hz, 150 VA (max)

	8001	8001 e-net	8001L	8002	8003	8200	8501	8700
0.005 - 432,000 cc/m <sup>2</sup> /day (0.0003 - 28,000 cc/100in <sup>2</sup> /day) No masking required		✓	✓					
0.008 - 432,000 cc/m <sup>2</sup> /day (0.0005 - 28,000 cc/100in <sup>2</sup> /day) No masking required	✓			✓	✓			
0.04 - 100,000 cc/m <sup>2</sup> /day (0.0001 - 5,000 cc/100in <sup>2</sup> /day) No masking required						✓		✓
1 - 99,999 cc/m <sup>2</sup> /day (0.07 - 6,800 cc/100in <sup>2</sup> /day) No masking required							✓	
0.000025 - 1,000 cc/pack/day 0.00004 - 1,000 cc/pack/day	✓	✓	✓	✓	✓	✓		✓
5°C to 50°C (41°F to 122°F) 15°C to 40°C (59°F to 104°F)	✓	✓	✓	✓	✓	ambient		ambient
Dry (0% RH) or generated RH (20% to 90%) Dry and Unknown Wet RH (Assumed saturated or 100% RH) Dry only	✓	✓	✓	✓	✓	✓	✓	✓
Expandable up to 5 Modules (Total 12 test cells) Expandable up to 5 Modules (Total 66 test cells)	✓	✓	✓	✓	✓	✓		✓
Films 50cm <sup>2</sup> Films 100cm <sup>2</sup> Packages	✓	✓	✓	✓	✓	✓	✓	✓
Films or NIST gas	✓	✓	✓	✓	✓	✓	✓	✓
100-240 VAC, 50/60 Hz, 840 VA (max) 100-240 VAC, 50/60 Hz, 150 VA (max)	✓	✓	✓	✓	✓	ambient	✓	ambient

**Systech Instruments Ltd (UK)**  
17 Thame Park Business Centre,  
Wenman Road,  
Thame, Oxfordshire OX9 3XA  
Tel: +44 (0)1844 216838  
Fax: +44 (0)1844 217220  
E-mail: advice@systech.co.uk  
www.systechillinois.com

**Illinois Instruments, Inc (U.S.)**  
2401 Hiller Ridge Road  
Johnsburg, Illinois 60051  
U.S.A.  
Tel: +1 815 344 6212  
Fax: +1 815 344 6332  
E-mail: sales@illinoisinstruments.com  
www.systechillinois.com

**Illinois Instruments (Thailand)**  
6th fl Nopnarong Bldg No7  
Ladprao23, Jatujak, Bangkok 10900  
Thailand  
Tel: +66 (0)2938 0798  
Fax: +66 (0)2938 1058  
E-mail: mai@illinoisinstruments.com  
www.systechillinois.com

**Systech Illinois (China)**  
Room 519, No.3 FuCheng Building  
No. 900 Quyang Rd, Hongkou district,  
Shanghai, China 200434  
Tel: +86 21 65533022  
Fax: +86 21 65539651  
Email: info@systechillinois.cn  
www.systechillinois.cn